



**PERRIN**  
**100%**  
**QUALITY**  
**100%** **MADE IN**  
**GERMANY**

CUSTOMIZED  
MANUFACTURER  
QUALITY  
HIGH-CLASS



## PERRIN GmbH

**We are a global manufacturer of Ball Valves for practically every conceivable type of professional use. The increasingly complex demands of the industry regarding pipeline valves mean that a high level of innovation and expertise are essential. Our company constantly strives to ensure it is fully geared for the future through extensive research and the highest quality standards**

For many years now, the successful implementation of solutions by our professional engineers and technicians has been reflected in the safety and reliability of the Ball Valves we produce. We quickly transform the many valuable insights we gain from customers into new, user-oriented concepts. National and international standards are always taken into account as well as specific customer requirements.

Your satisfaction constantly motivates and drives us and is the foundation of our corporate philosophy.



# AN ORGANISATION

For more than 50 years now, PERRIN, a subsidiary of the Kitz Corporation, has been THE manufacturer of Ball Valves for industrial use. We develop valves for virtually any application. With two manufacturing facilities in Nidderau and Prenzlau and around 160 employees



# YOU CAN

# TRUST

## PERRIN GMBH Nidderau | in the Rhine-Main region

- > Executive Board
- > Sales/purchasing
- > Order Management
- > Design and development
- > Quality assurance and planning
- > Warehouse management semi-finished/finished products
- > Ball production/assembly
- > Production of internal components for Metal-Seated Valves

## PERRIN GMBH Prenzlau | near Berlin

- > Management
- > Warehouse management - raw materials
- > Manufacturing of all housing components
- > Prefabrication of internal components for Metal-Seated Valves
- > Machining centres

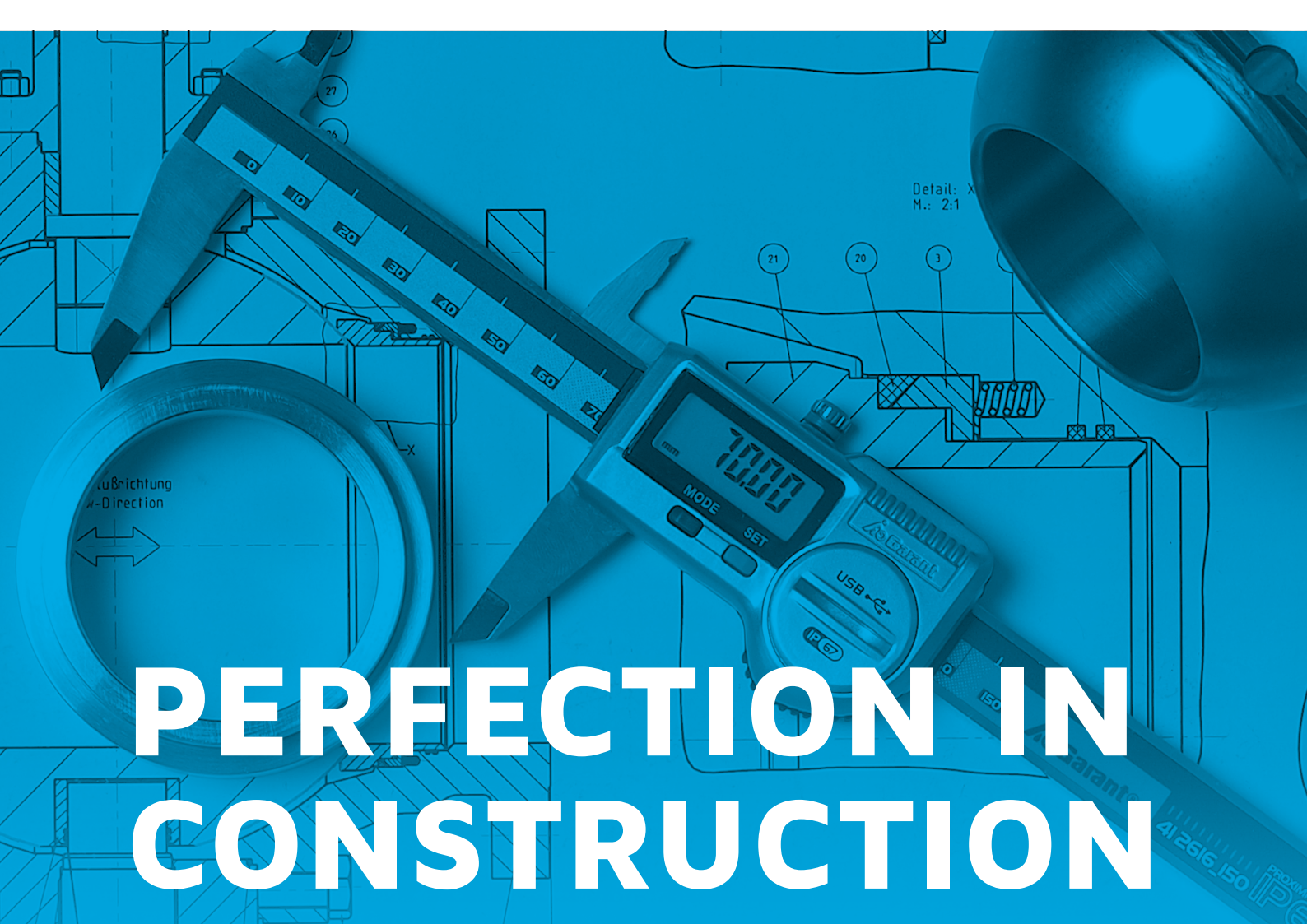
## PERRIN parent company KITZ Corporation

- > Headquarters in Japan
- > Approx. 4,000 employees
- > More than 25 subsidiaries

approx. 4000 >

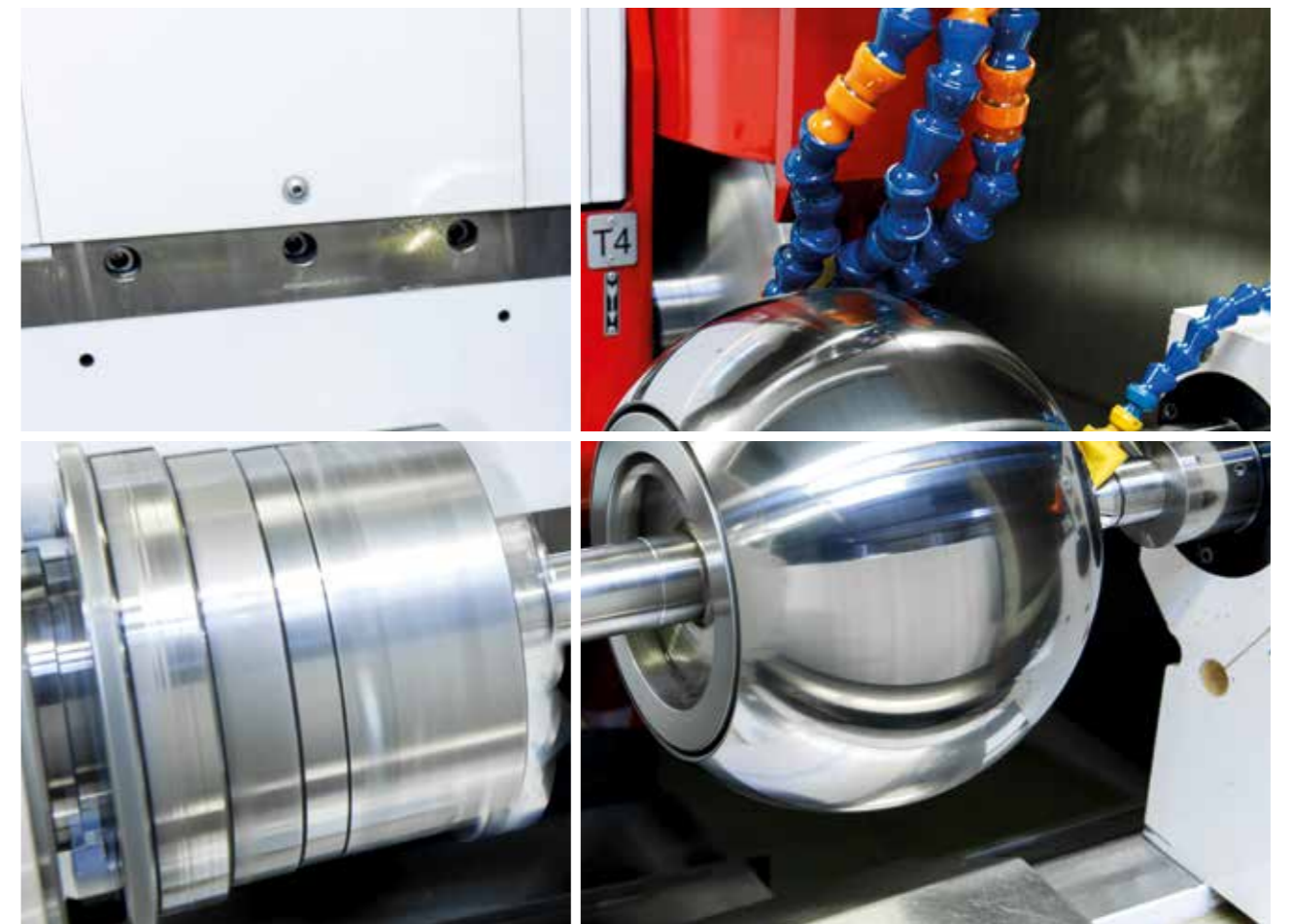
employees  
in the KITZ group





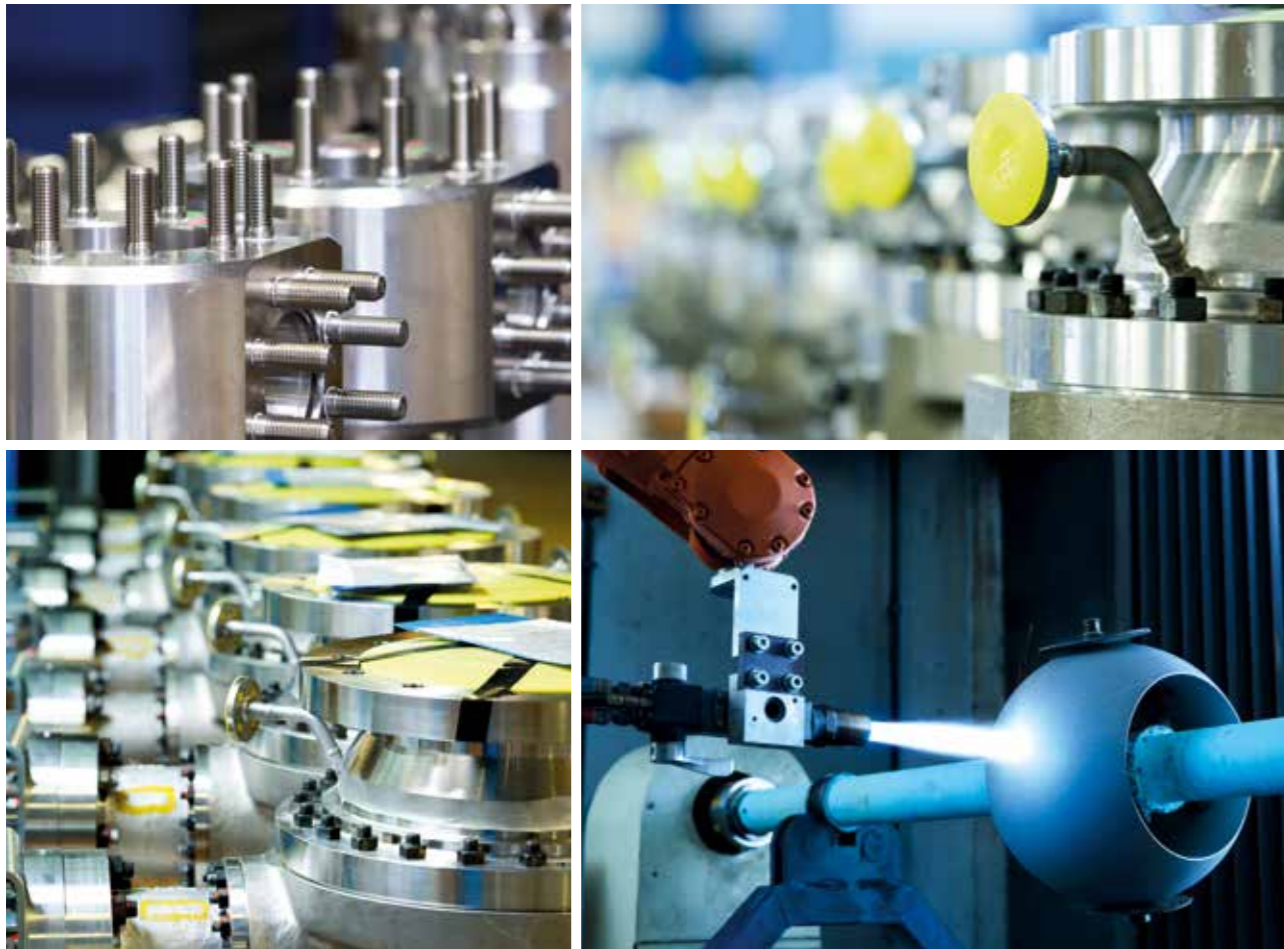
# PERFECTION IN CONSTRUCTION & DEVELOPMENT

We concentrate on high quality special products rather than mass production and always have the customer's needs in mind. Over recent years we have produced more than 80,000 different Ball Valves. And virtually all Ball Valves are specially designed – always geared to the process and the customer's requirements. We define ourselves as a specialist Ball Valve manufacturer with in-house production and development.



## DEVELOPMENT AND DESIGN DETERMINE THE QUALITY OF A PRODUCT

PERRIN Ball Valves have a long service life and guarantee a high level of reliability. When it comes to extreme temperatures, critical applications or high pressure levels, we have a solution for everything. Each valve is a unique individual item and always manufactured according to your specifications. Refurbishing Ball Valves that have seen 30 years of constant use, using original spare parts, is no big deal for us. PERRIN Ball Valves are extremely low-maintenance and guarantee maximum reliability even with high frequency cycles.



# PRODUCTION AND INSTALLATION PRECISION AT THE HIGHEST LEVEL!

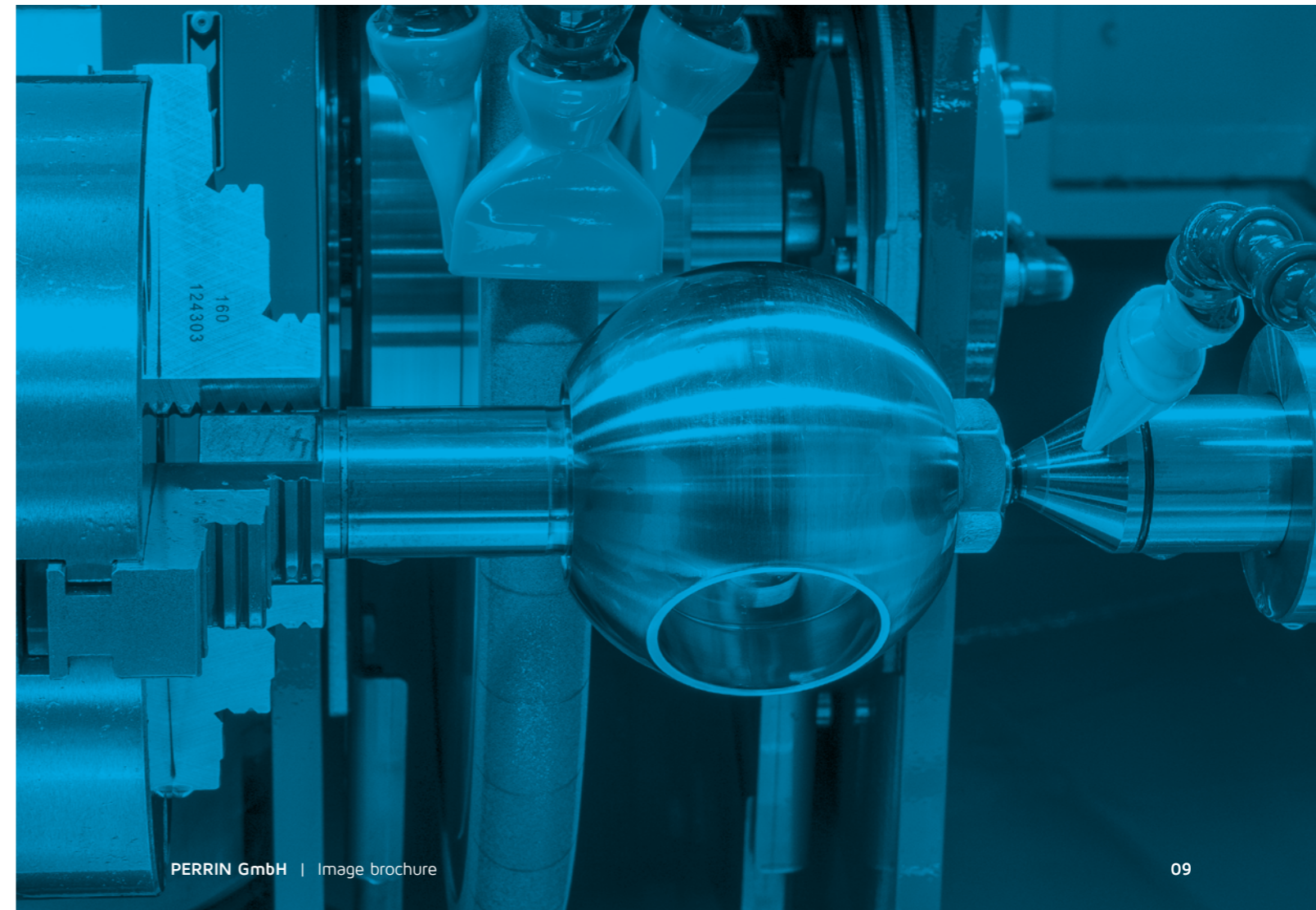
## STATE-OF-THE-ART MACHINERY ENSURES ACCURACY AND PRECISION!

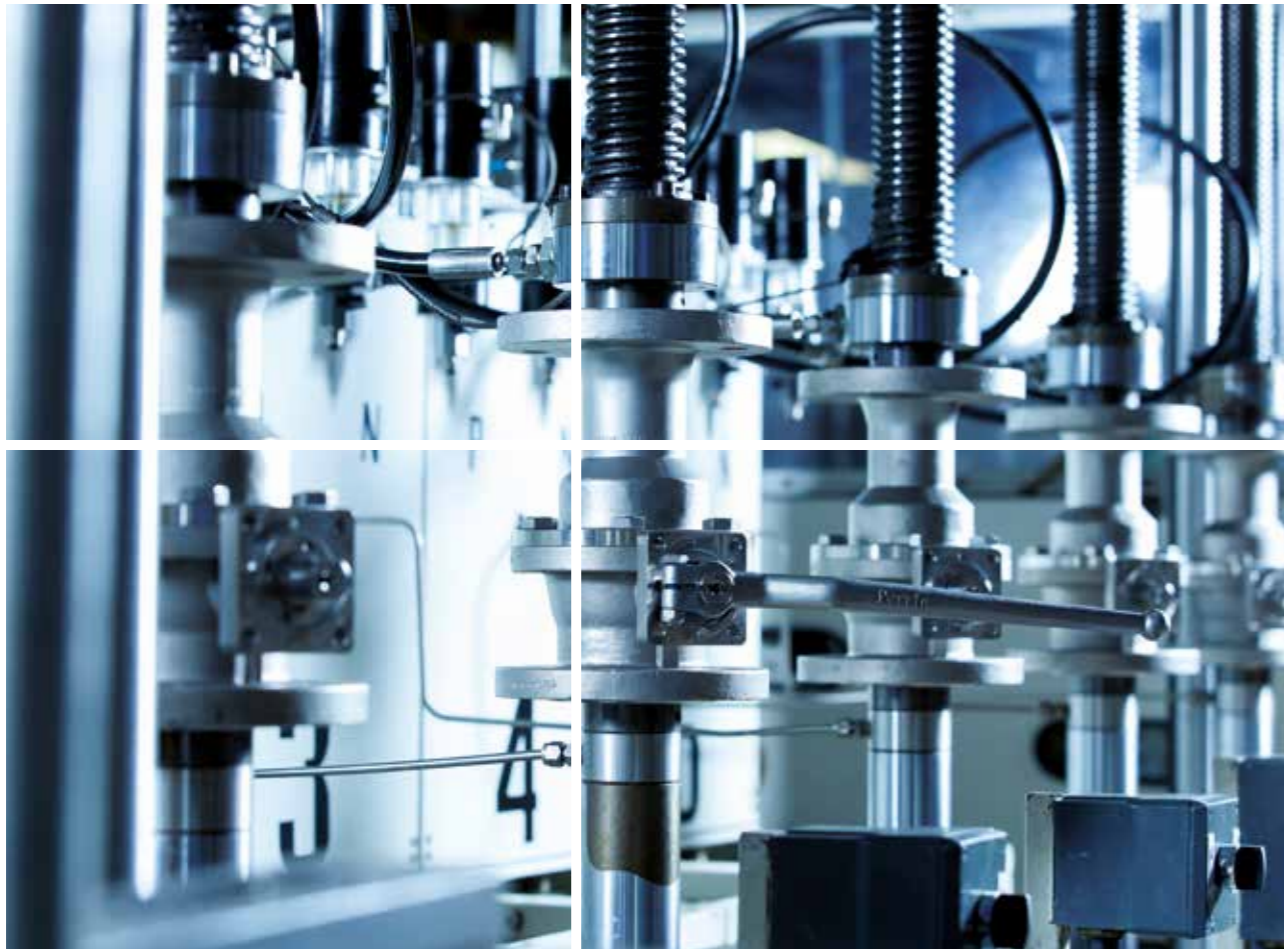
PERRIN undertakes the design, calculation, production and testing of its own coating systems with in-house state-of-the-art machinery; short administrative paths, flat hierarchies, quick decisions and constant communication with our customers.

**At PERRIN, production takes place at its two manufacturing facilities.**

At the **Prenzlau** plant, valve components are produced on modern CNC machines which ensure an extremely high standard of quality. The existing DNC network provides the necessary flexibility.

At the plant in **Nidderau**, the Ball Valves are assembled, tested, and prepared for shipping. The production of sealing elements for Metal-Seated Valves also takes place here. Metal-Seated Ball Valves are, without a doubt, our specialty. Reliable tightness at high pressures and high levels of contamination, materials that are highly-resistant to various media, certified fire-resistance and problem-free operation involving wide temperature ranges and fluctuation in temperature: These are just some of the many benefits of our Metal-Seated Ball Valves.





## 100% INSPECTION - GUARANTEED QUALITY FOR ALL YOUR APPLICATIONS

### Tests and inspections

- > Automatic test stand for smaller nominal sizes up to DN 100 / DN 4"
  - > Simultaneous testing of up to 5 Ball Valves
  - > Visual and electronic recording of results (bubble count) and evaluation
  - > 3-dimensional coordinate measuring machine for measuring, for example, the roundness of the balls
  - > PMI (positive material identification), test device for material identification
  - > Special testing, for example cryogenic-, fire-safe and helium leak tests
- Standard acceptance testing**
- > As standard: oil and grease-free assembly
  - > 100% quantity pressure and tightness test
  - > 100% quantity strength test at 1.5 x PN
  - > 100% quantity functional test
  - > All tests in accordance with international or customer standards
  - > Visual inspection prior to shipping

ONE HUNDRED TONS

FIVE HUNDRED TONS

The central objective of PERRIN is to maintain a leading position in the production of Ball Valves and to ensure sustainable growth.

## CERTIFIED QUALITY



Quality management in accordance with **DIN EN ISO 9001** helps us to achieve this goal. The processes included in the quality management system and their interactions cover all technical, commercial and organisational aspects that affect the quality of PERRIN and its products.

The production and inspection of the valves is in accordance with national and international regulations such as **PED 97/23/EC, ASME B 16.34, API 6D, DIN EN 1983, DIN EN 14292, NACE etc**



# A PASSION FOR BALL VALVES

PERRIN Ball Valves are primarily designed to meet the requirements of the chemical and petrochemical industries as well as those of the plant construction sector. Our decades of experience in design, production and processing, and our state-of-the-art machinery form the basis for the outstanding quality and reliability of our products.

No matter whether it's special materials, special Ball Valve connectors, flush ports, heating or cooling jackets, high or low-temperature applications, automation or special solutions of any kind: We develop individual customer solutions for a wide range of applications.

For our key products – Metal-Seated Ball Valves – we produce high-quality metal coatings in our own coating plants. These are made of a wide range of materials depending on the individual case. The subsequent processing using the latest grinding and lapping technology achieves excellent results regarding the tightness of the Metal-Seated Valves.

## DN

DN 15 to DN 600  
DN 1/2" to DN 24"

## PN

PN 10 to PN 420  
ANSI Class 150 to  
Class 2500

## °C

-196°C to +800°C

## Materials

Carbon steel, stainless steel  
Titanium, Hastelloy  
Special materials

**Accessories:** Actuators: pneumatic, electric and hydraulic  
Heating and cooling jackets, stem extensions, and locking and snap-in locking devices

## 2-WAY BALL VALVES

## VARIOUS MULTI-PORT BALL VALVES / DIVERTER VALVES

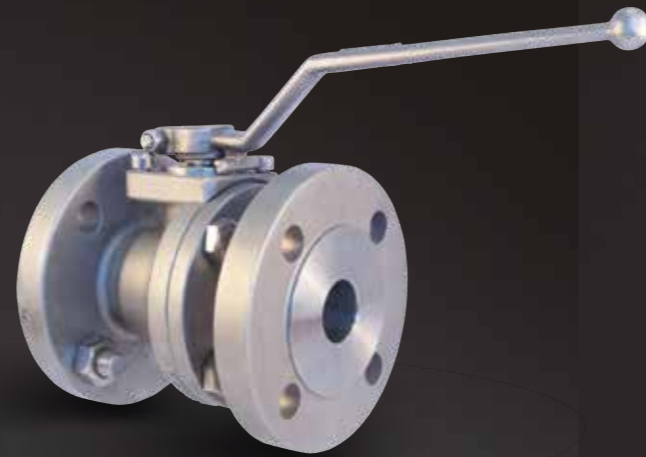
## BALL VALVE ACCESSORIES



## 2-WAY BALL VALVES FLOATING BALL

soft sealing | metal sealing | carbon sealing

**DN:** 15 (1/2") to DN 600 (24")  
**PN (Class):** 10 (150) to 420 (2500)  
**Temp.:** min. -196°C to max.+600°C



The 2-way Ball Valves with a floating ball are designed with a 2 or 3-part body. The floating ball design creates tightness on the downstream side, which keeps increasing as the up-stream pressure continues to rise.

### → DIN

Type	DN	PN	Body	Body mat.	Spring seats	Temperature	Application examples
11	15 - 150	10 - 40	3-piece	as required	n.a.	-60°C to +200°C	nuclear power
70	15 - 300	10 - 420	2-piece	as required	n.a.	-160°C to +450°C	PTA / pharma
75	15 - 150	10 - 40	2-piece	precision casting	n.a.	-60°C to +450°C	general chemical
80	15 - 300	10 - 420	2-piece	as required	on one side	-196°C to +600°C	vacuum
85	15 - 150	10 - 40	2-piece	precision casting	on one side	-60°C to +450°C	vacuum
88	50 - 600	16 - 420	2-piece	as required	on both sides	-60°C to +450°C	mining / media containing solids

### → ANSI

Type	DN	Cl.	Body	Body mat.	Spring seats	Temperature	Application examples
11	15 - 150	150 - 300	3-piece	as required	n.a.	-60°C to +200°C	nuclear power
70	1/2" - 12"	150 - 2500	2-piece	as required	n.a.	-160°C to +450°C	PTA / pharma
75	1/2" - 6"	150 - 300	2-piece	precision casting	n.a.	-60°C to +450°C	general chemical
80	1/2" - 12"	150 - 2500	2-piece	as required	on one side	-196°C to +600°C	vacuum
85	1/2" - 6"	150 - 300	2-piece	precision casting	on one side	-60°C to +450°C	vacuum
88	2" - 24"	150 - 2500	2-piece	as required	on both sides	-60°C to +450°C	mining / media containing solids

## 2-WAY BALL VALVES TRUNNION MOUNTED BALL

soft sealing | metal sealing | metering Ball Valve

**DN:** 15 (1/2") to DN 600 (24")  
**PN (Class):** 10 (150) to 420 (2500)  
**Temp.:** min. -196°C to max.+800°C



The trunnion mounted 2-way Ball Valves are equipped with 2 or 3-component body. Spring-loaded seats are used for sealing. Due to the absorption of force by the trunnion and stem the trunnion mounted Ball Valve not only has less torque than the floating versions, but is also suitable for larger sizes and higher pressure levels. In the standard version these are sealed on the upstream side and if required can be supplied as a „double block and bleed (DBB)“ or „double insulation and bleed (DIB)“ version.

### → DIN

Type	DN	PN	Body	Body mat.	Spring seats	Temperature	Application examples
14	25 - 600	10 - 420	2-/3-piece	as required	on both sides	-196°C to +800°C	all-round
15	15 - 300	10 - 40	2-piece	as required	on one side	-60°C to +450°C	bottom drain
16	15 - 300	10 - 250	3-piece	as required	on both sides	-60°C to +450°C	high switching frequency (1 million / year)
17	15 - 500	10 - 100	top entry	as required	on one side	-196°C to +450°C	LNG
19	1/4" - 9/16"	max. 103 Mpa	3-piece	stainless steel	on both sides	-50°C to +85°C	hydrogen

### → ANSI

Type	DN	Cl.	Body	Body mat.	Spring seats	Temperature	Application examples
14	1" - 24"	150 - 2500	2-/3-piece	as required	on both sides	-196°C to +800°C	all-round
15	1/2" - 12"	150 - 300	2-piece	as required	on one side	-60°C to +450°C	bottom drain
16	1/2" - 12"	150 - 1500	3-piece	as required	on both sides	-60°C to +450°C	high switching frequency (1 million / year)
17	1/2" - 20"	150 - 600	top entry	as required	on one side	-196°C to +450°C	LNG
19	1/4" - 9/16"	max. 103 Mpa	3-piece	stainless steel	on both sides	-50°C to +85°C	hydrogen



## MULTI-PORT BALL VALVES FLOATING BALL

soft sealing | metal sealing | carbon sealing

**DN:** 15 (1/2") to DN 150 (6")  
**PN (Class):** 10 (150) to 40 (300)  
**Temp.:** min. -60°C to max.+200°C



The 3-way Ball Valves with a floating ball are designed with a 2-component or multi-component body. The floating ball design creates tightness on the downstream side, which keeps increasing as the up-stream pressure continues to rise. The balls are available with an L or T bore.

### → DIN

Type	DN	PN	Body	Body material	Ways	Angle	Bore	spring seats	Temperature range	Application examples
20	15 - 100	10 - 40	multi-part	as required	3		L or T	n.a.	-60°C to + 200°C	general chemical

### → ANSI

Type	DN	Cl.	Body	Body material	Ways	Angle	Bore	spring seats	Temperature range	Application examples
20	1/2" - 4"	150 - 300	multi-part	as required	3		L or T	n.a.	-60°C to + 200°C	general chemical
27	1" - 6"	150 - 300	2-piece	Precision casting	3		L	n.a.	-60°C to + 200°C	general chemical

## MULTI-WAY BALL VALVES TRUNNION MOUNTED BALL

soft sealing | metal sealing | metering Ball Valve

**DN:** 15 (1/2") to DN 500 (20")  
**PN (Class):** 10 (150) to 250 (1500)  
**Temp.:** min. -60°C to max.+550°C



The trunnion mounted multi-way Ball Valves are equipped with a 2-component or 3-component body. Spring-loaded seats are used for sealing. Due to the absorption of force by the trunnion and stem the trunnion mounted Ball Valve not only has less torque than the floating versions, but is also suitable for larger sizes and higher pressure levels. The ball and stem are made in one piece, so that even with a high switching frequency, no slackness and resulting wear can occur on these components' connectors. The balls are equipped with different bores (e.g. L, T or X) depending on the model, so customized solutions for the distribution of media are available.

### → DIN

Type	DN	PN	Body	Body material	Ways	Angle	Bore	spring seats	Temperature range	Application examples
21	15 - 500	15 - 250	multi-part	as required	3		L or T	Spring-loaded	-60°C to +550°C	general chemical
22	15 - 500	15 - 250	multi-part	as required	3		120° L	Spring-loaded	-60°C to +550°C	PP/PE
23	15 - 500	15 - 250	multi-part	as required	4		X	Spring-loaded	-60°C to +550°C	general chemical
24	15 - 500	15 - 250	multi-part	as required	3 - 5		L or T	Spring-loaded	-60°C to +550°C	general chemical
25	15 - 250	10 - 40	multi-part	as required	3		150° L	Spring-loaded	-60°C to +550°C	general chemical

### → ANSI

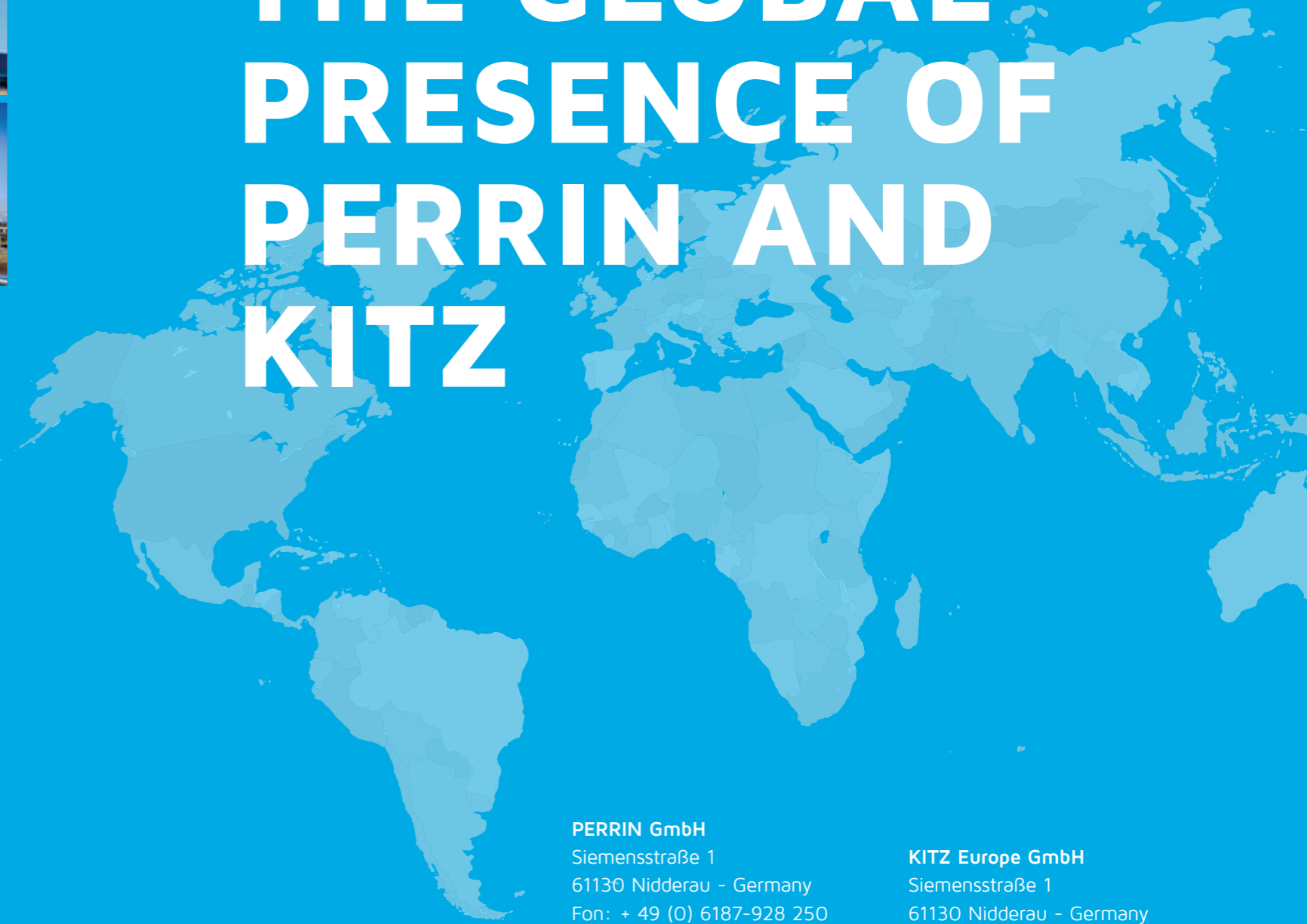
Type	DN	Cl.	Body	Body material	Ways	Angle	Bore	spring seats	Temperature range	Application examples
21	1/2" - 20"	150 - 1500	multi-part	as required	3		L or T	Spring-loaded	-60°C to +550°C	general chemical
22	1/2" - 20"	150 - 1500	multi-part	as required	3		120° L	Spring-loaded	-60°C to +550°C	PP/PE
23	1/2" - 20"	150 - 1500	multi-part	as required	4		X	Spring-loaded	-60°C to +550°C	general chemical
24	1/2" - 20"	150 - 1500	multi-part	as required	3 - 5		L or T	Spring-loaded	-60°C to +550°C	general chemical
25	1/2" - 10"	150 - 300	multi-part	as required	3		150° L	Spring-loaded	-60°C to +550°C	general chemical



**You can find our ball valves  
in various industries**

- Refineries
- Iron, Steel And Aluminium
- Nuclear Power Plants And Waste Management
- Off-shore
- LPG
- Chemical
- Petrochemical
- Cement Production
- Transportation Of Solids
- Mechanical Engineering For Plant Construction /  
Loading Technology
- Coal Gasification & Liquefaction

# WORLDWIDE SERVICE - THANKS TO THE GLOBAL PRESENCE OF PERRIN AND KITZ



**PERRIN GmbH**  
Siemensstraße 1  
61130 Nidderau - Germany  
Fon: + 49 (0) 6187-928 250  
Fax: + 49 (0) 6187-928 251  
E-mail: [postoffice@perrin.de](mailto:postoffice@perrin.de)  
[www.perrin.de/en](http://www.perrin.de/en)

**KITZ Europe GmbH**  
Siemensstraße 1  
61130 Nidderau - Germany  
Fon: + 49 (0) 6187-928 100  
Fax: + 49 (0) 6187-928 251  
E-mail: [intsales@kitz-eu.com](mailto:intsales@kitz-eu.com)

